

under migrants' perspective



AIMS AND OBJECTIVES

The main aim of this project is to raise young people's awareness/understanding on migration crisis in Europe, offering the opportunity to create strong networks and develop a sense of European citizenship and values, thereby promoting non-formal learning and cooperation in the field of youth.

The objectives of the project are:

- To foster positive interaction, active participation, self-reflection and personal growth of young people from different social backgrounds of EU by involving them in Youth Exchange that develop their key competences and address issues relevant for them, conducting joint vicarious activities, with holistic experiences and reflections.
- To develop positive attitudes towards arts and its expressions, encouraging experimentation and involvement, stimulating creativity and imagination.
- To raise awareness on migration panorama and its difficulties within participants' societies and within EU using artistic products on the youth exchange: Theatre play, an exhibition and a video on migration.
- To promote diversity, intercultural dialogue and intercultural learning, developing the sense of unity through diversity within EU, thereby promoting social inclusion
- To promote the Erasmus+ programme, EU values and participation in future activities through the use of non-formal education while promoting its recognition through the YouthPass certificate.

The main problems the project responds to are: low awareness on the migration crisis happening in Europe as well as the prejudice and discrimination towards migrants and refugees linking them to violent extremists and therefore develops more fear and xenophobia, a vicious circle we must break in Europe.

DURATION

8 days (including arrival and departure), from the 2nd till the 9th of October 2019. Participants have to arrive to the project venue by 20:00 on 2 October and can leave only after breakfast on 9 October.

PARTICIPANT'S PROFILE

42 participants in total. 5 participants + 1 group leader from 7 Partner Countries.

This project has been designed and developed to be addressed to youngsters involved in their local communities, involved in volunteering or with an artistic background. In order to be eligible as a participant, it is necessary to be between 18–25 years old (no maximum limit in case of the group leaders) and legally resident in the country in which the sending organisation is registered.

The participants should:

- be able to speak English;
- have effort to develop themselves in the topic of migration;
- be young people eager to experiment new tools and creative ways to raise their awareness and understanding on migration;
- desire to share their experiences and learn from their peers in a multicultural learning environment;
- committed to contribute in the full project in all of its phases, including dissemination and follow up with the participation to the newly created platform and network;
- group leaders should have previous experience in the Erasmus+ Programme.

METHODS

Non-Formal Education will be the main methodology used during the youth exchange, together with theoretical aspects, to ensure a complete learning dimension, using methods such as group discussions, round tables, simulations, and dynamic, creative and participative activities.

HOW TO PREPARE AND WHAT TO BRING?

Thematic preparation tasks:

- Research about countries' realities regarding migration, inclusion programs and statistics;
- To support group leaders in the preparation of the activities for the project.

Intercultural preparation task:

- The programme will include an international night for which we ask you to bring your local food, beverages, sweets and anything you think that might represent your culture/country. To celebrate and educate about the different cultures and nationalities present, national groups will be given 10 minutes each to present their countries through costume, song, dance, pictures and stories.
- A game night aimed at light intercultural entertainment. Countries will play traditional cultural games, initiated by some Georgian games. The games should be quick and easy so they can be shared easily later.
- Group leaders will also have other games planned for throughout the evening in order to bring the whole group together if necessary.

RUSTAVI CITY

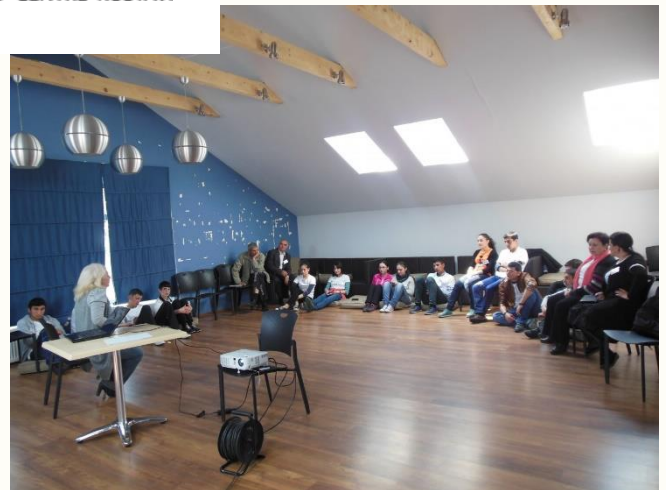
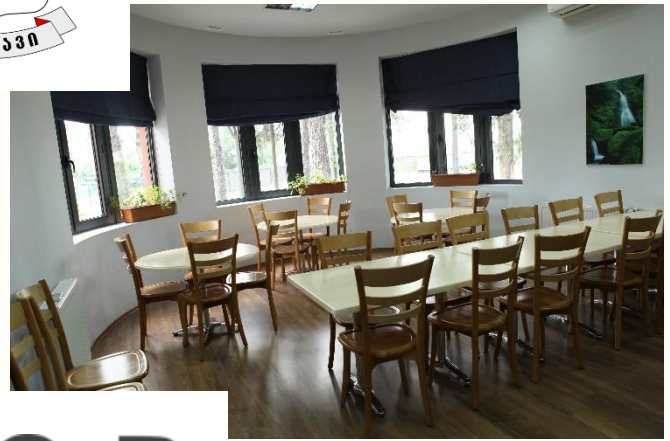
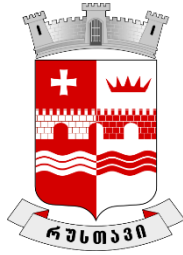
Rustavi is a city in the southeast of Georgia, in the province of Kvemo Kartli, situated 25 km southeast of the capital Tbilisi. It has a population of 125,000 and is dominated by the Rustavi Metallurgical Plant. Rustavi is one of the ancient towns of Georgia. With a new town square, a theatre in the process of being renovated, things are happening in this former industrial town. Rustavi is largely untouched by tourism, so the observer can see Georgian city life in a very pure form. Today Rustavi is the fourth largest city in Georgia. Its central streets are very busy thanks to the variety of shops, restaurants and cafes. Rustavi is very green, light and cozy.

ACCOMMODATION AND MEALS

Rustavi Scout Centre: Located in a pleasant environment in Rustavi, the Scout Centre is a 30-minute ride from Tbilisi. Free WiFi is available in the public areas. All units are functionally-furnished, equipped with shared bathroom with a shower. 4-6 participants will be accommodated per room, divided by gender, mixed by nationality.

Participants will be provided 3 meals a day, as well as coffee breaks. Dietary needs such as vegetarianism will of course be taken into consideration as much as possible. Please be however open-minded and curious to Georgian cuisine.

Please note that if some participants will stay longer for holiday reasons, organisers will not provide them accommodation and transportation to Tbilisi or airport out of project days (2-9 Oct.)



TRAVEL TO THE VENUE

KUTAI SI INTERNATIONAL AIRPORT is the most common arrival point. Flights to Kutaisi are operated by Wizzair discount airlines. For participants from Finland, Romania and Hungary we recommend to choose Kutaisi as a destination, from where Tbilisi can be reached in 4 hours. Buses (GeorgianBus and Omnibus companies) are leaving from the car park in front of the airport entrance and leave soon after the arrival of each flight. A bus ticket costs **20 GEL** (7 EUR) and buses go directly to Tbilisi Liberty square.

FLIGHTS TO TBILISI are mostly operated by national and budget airlines from many big cities across Europe. For participants arriving from Portugal and Ukraine we recommend to arrive directly to Tbilisi. From Tbilisi airport there is a blue bus N37 to the city center. The bus leaves every 30 minutes from the airport and the ticket price for the bus and metro is **0.50 GEL**. You can check the bus lines and directions and plan the transportation on the following web page ttc.com.ge. If you take a **taxi** from the airport to the city, don't pay more than **25 GEL**, however taxi prices cannot be reimbursed!

IN TBILISI the bus and metro fare are paid via control devices using plastic **"metro-money"** card and/or coins (tetri). The plastic **"metro-money"** card should be obtained before the travel. Paying straight to the driver is banned. You will be charged with 15 GEL if you travel without a valid ticket. Metro-money can be bought at the Metro stations.

MEETING POINT IN TBILISI: In case of larger groups of participants arrive together or at the same time, we will arrange a minibus from the city centre or the airport. More information about pick-up location will be shared later. The travel from Tbilisi to the project venue in Rustavi takes about 40 minutes. We suggest to arrive to Tbilisi not later than 6pm as the programme in Rustavi will start at 8pm.

ALTERNATIVELY participants can reach Rustavi by local transportation (marshrutka) from Tbilisi Sport Palace and other stops from Tbilisi for 1.5 GEL. In this case the organisers will pick up participants at Rustavi Municipality (Kostava ave. 20).

You are required to choose the cheapest travel option.

Participants are kindly required to arrive to the project venue (Rustavi Scout Centre) by 8pm on 2 October.

Address of project venue: Rustavi, Meliton Balanchivadze str. 9. <https://iscr.ge>

VISA AND TRAVEL DOCUMENTS

Participants shall be aware of the required travel documents and other conditions of traveling to Georgia. Please check the validity of your ID or passport before departure. Before travelling, check whether you are entitled to leave your country and enter to Georgia with your travel documents!

INSURANCE

Participants are required to have an insurance for the whole duration of the project. This is obligatory for your safety and health. The European Health Insurance Card is NOT valid in Georgia.

TRAVEL BUDGET

Country	City	Organisation	Number of participants	Travel cost per person
ARM	Sarnaghbyur	YCAC	5+1	180
FIN	Espoo	ACR	5+1	360
GEO	Rustavi	GACR	5+1	0
HUN	Budapest	ICRP	5+1	360
POR	Braga	Conexão Jovem	5+1	820
ROM	Bucharest	AVATAR Association	5+1	275
UKR	Kharkiv	STELLA NGO	5+1	275

REIMBURSEMENT OF TRAVEL EXPENSES

Please do not buy any tickets without our confirmation or permission. You are strictly required to contact us and send travel plan of the participant beforehand. You can proceed with the ticket purchase only after you get our permission.

Travel plans have to be sent to institute@culturalrelations.org within 5 days of approval of applications. Deadline for purchasing tickets: 5 September 2019.

We kindly ask all participants to ask for an invoice/receipt for all travel tickets with the following data on it: **Kulturalis Kapcsolatokert Alapitvany, 1131 Budapest, Gyongyosi utca 45. Hungary.**

We ask you to bring us all boarding passes and tickets with invoices for your travel expenses. If you do not have these documents we will not be able to reimburse your money. In order to receive full travel reimbursement, participants have to attend on the educational programme, fill in the individual participants' report after the project and take part in dissemination of results.

Travel costs are fixed amount of money per participant based on the travel distance. Travel distance was calculated using the distance calculator supported by the European Commission. Each Partnership Agreement with every Partner states the rule about money that will be given to the Partner for travel expenses. We will reimburse you the amount of money that you have spent on travel tickets but not more than the fixed amount per participant from each country. The costs of travel by private car cannot be reimbursed. Extra costs (insurance and catering during your travel) cannot be reimbursed.

In case of EU citizens, reimbursements will be made via bank transfer to the partner organisations not earlier than 3 months after the end of the project and after you send back the documents of return trip. Payment of bank transfer fees will be borne by recipients. In case of non-EU citizens, reimbursements will be made on the spot in cash in EUR on the last day of the activity if all travel documents are provided.

!!! And, it is very important, that you **keep all travel tickets/boarding passes/invoices**, and bring it with, so that we are able to reimburse the travel costs **!!!**

ADDITIONAL EXPENSES

The official currency of Georgia is lari. Do not forget to change your currency if you want to buy souvenirs or some extra things you need (accommodation and meals are provided for the project days).

WEATHER

All updates about the weather in Rustavi are available here

<https://www.accuweather.com/en/ge/rustavi/169299/october-weather/169299>

FACEBOOK GROUP



We invite all participants to join the Facebook group dedicated to the project:

<https://www.facebook.com/groups/UnderMigrantsPerspective>

APPLICATION DEADLINE

The application form can be accessed at the following link:

http://culturalrelations.org/Files/Erasmus/Application_form-UMP.docx

Deadline for application: 1 September 2019

1.9.2019

application
deadline

5.9.2019



buying of
flight tickets




2-9.10.2019

training in
Rustavi



CONTACT THE ORGANISERS

András Lorincz  andras.lorincz@culturalrelations.org
 <https://www.facebook.com/lorinczandras>
 0036 20 572 5972

Kristina Lazebna  kristina.lazebna@culturalrelations.org
 <https://www.facebook.com/kristina.lazebnaia>
 0036 20 572 5972

Henrique Antunes  a.henrique.antunes@gmail.com
 <https://www.facebook.com/henrique.antunes.3576>
 00351 917 914 795

Institute for Cultural Relations Policy (Kulturális Kapcsolatokért Alapítvány)

 1131 Budapest, Gyöngyösi u. 45. (8. lh. fszt. 3.)
 culturalrelations.org  institute@culturalrelations.org
 culturalrelations.org/publications/blog
 [culturalrelations](https://www.facebook.com/culturalrelations)  [ICRP_Budapest](https://twitter.com/ICRP_Budapest)
 [company/institute-for-cultural-relations-policy](https://www.linkedin.com/company/institute-for-cultural-relations-policy)
 [icrpbudapest](https://www.youtube.com/icrpbudapest)  [icrpbudapest](https://www.instagram.com/icrpbudapest)  0036-20-572-5972

